

SHENZHEN JOABOA TECHNOLOGY CO.,LTD

ADD:NO.201-206, 2nd Floor,Multiuse Office Building, No.32, Meilin Road, FutianDistrict,Shenzhen,China.

TEL:0755-83166906400-888-6908

FAX:0755-83166308

WEB:www.zhuobao.com

P.C.:518049

SHENZHEN JOABOA WATERPROOFING MATERIALS FACTORY

ADD: Pingkui Road, Jingui Community, Pingshan Street, Pingshan New Distrcit, Shenzhen, China.

TEL:0755-84627839

FAX:0755-84627338

P.C.:518118

BEIJING JOABOA TECHNOLOGY CO.,LTD

ADD:NO.1Fengchan Road, Jigezhuang Village, Huoxian Town, Tongzhou District, Beijing, China.

TEL:010-80561601

FAX:010-80561601-800

P.C.:101112

SUZHOU JOABOA TECHNOLOGY CO.,LTD

ADD:Shuangta Bridge North, Qidu Town, Wujiang City, Jiangsu Province, China

TEL:0512-63828558

FAX:0512-63828705

P.C.:215234

WUHAN JOABOA TECHNOLOGY CO.,LTD

ADD:Jinyang Road, Yangluo economic Development District, Wuhan, China

TEL:027-51315555

FAX:027-51909799

P.C.:430415

CHENGDU JOABOA NEW BUILDING MATERIALS CO.,LTD

ADD:Choucheng Road, Huaikou Town, Jintang Country, Chengdu City, Sichuan Province, China

TEL:028-84150066

FAX:028-84150066

P.C.:610404



卓宝科技

JOABOA TECHNOLOGY



Ver:20121128

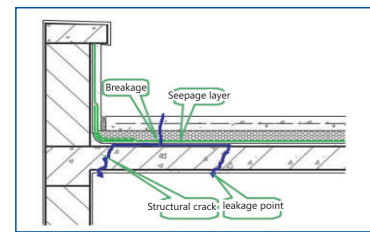
Bac™ Wet-application Waterproofing System Introduction

Generally speaking, there are three factors lead to Seepages:

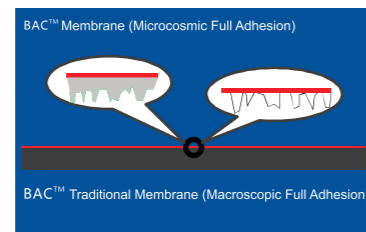
1. Waterproofing layer is imperfect: It's hard to completely avoid weak points or breakages, which makes waterproofing layer with deficiencies or hidden defects more or less.
2. The main structure is with defects: It's hard to completely avoid construction joint, deformation joint and small fissures in structure.
3. There is fluid channeling between the main structure and the waterproofing layer: Through weak points or breakage, water gets in and fluid-channeling happens. In such a case, once the main structure is with defects, seepages would occur.

In most cases, traditional waterproofing materials can only form into an "protective film" in ideal status, thus, commonly seen thorny problem would arise. Any defect in waterproofing layer can lead to fluid-channeling, which could further make larger area of waterproof layer even the whole lose efficacy. Obviously, in terms of waterproofing system, tackling the problem of fluid-channeling is the most convenient and effective way to solve leakage problems.

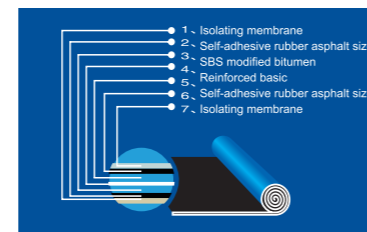
As key products popularized by Ministry of Construction, BAC waterproofing membrane system is the one of the most effective way in solving the problem above. By adopting wet-placement application, it sticks to the base closely and firmly, forming a reliable "Skin Type" waterproofing system which can eradicate fluid-channeling phenomenon thus root out necessary conditions for seepage. In such a case, even if there are defects between the main structure and the waterproofing layers, seepage would not happen generally.



Traditional Waterproofing System



BAC™ Membrane Realizes Microcosmic Full Adhesion With Flow Cement Grout



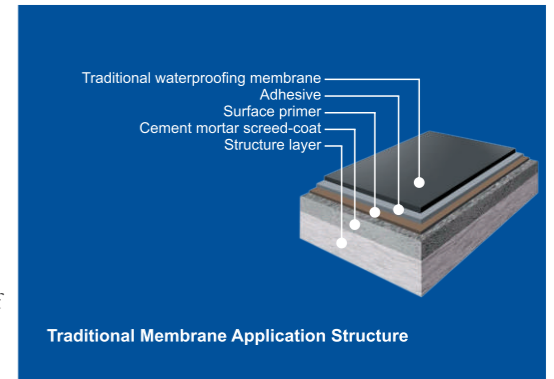
Bac™ Wet-application Waterproofing and "Skin Type" waterproofing theory

Joaboa Tech began to change traditional waterproofing theories by long-term exploration and research, and innovative to put forward and practice the waterproofing theories of "Skin Type". With such a theory as guidance, Joaboa Tech developed a series of self-adhesive waterproofing membranes, among which, BAC Wet-application membrane is the emblematic and leading product.

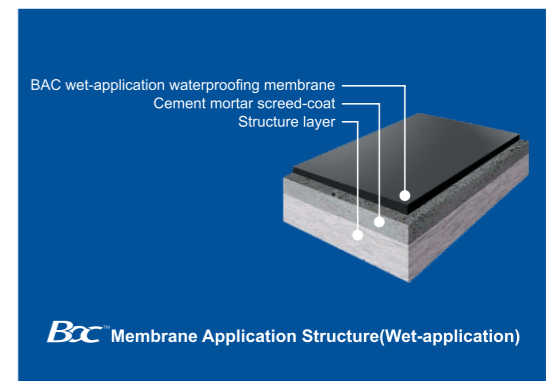
The birth of BAC wet-application waterproofing membranes and the technology of wet-application initiated by Joaboa have led a profound revolution in the waterproofing industry. Any defect in waterproofing layer can lead to fluid-channeling, which could further make larger area of waterproofing layer even the whole lose efficacy. And it is difficult to find out and repair the seepage spots. Judging from actual waterproofing effectiveness, to bring waterproofing layers into full play under whatever conditions and avoid fluid-channeling, the most effective and economic way is, regardless of the external protection layer stuck outside or inside, to firmly and eternally stick the waterproofing layers to the beneath of the main structures like base plates of basement, side walls, head plates or roof plates. This is the waterproofing theories of "Skin Type".

BAC wet-application waterproofing membrane is made of self-adhesive rubber bitumen as master material with highest water impermeability and cement as the cheapest adhesives, constituting the most reliable and economical waterproofing system called "Skin Type".

On side walls, head plates and roofs of basements, with wet application of cement slurry or cement mortar, they are combined tightly into one unit with the structure, enhancing the reliability of waterproofing layer without worries about fluid-channeling.

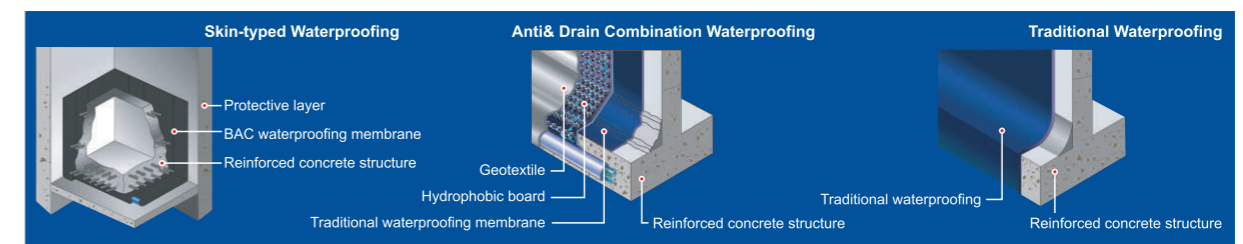


Traditional Membrane Application Structure



Bac Membrane Application Structure (Wet-application)

Waterproofing Method	Anti& Drain Combination Waterproofing	Traditional Waterproofing	Skin-type Waterproofing
Hydraulic pressure	hydrodynamic pressure, small	hydrostatic pressure, big	hydrostatic pressure, big
Reliability	high	Low, easy seepage	High, no seepage
Direct Cost	high	high	low
Future Cost	more	more	less
Construction Period	Process complicated, slow	Process complicated, slow	Process simple, quick
Conclusion	Reliability, expensive	Unreliability, abandon	Reliability, cheap, widely used



Advantages of BAC wet-application waterproofing membrane

Reliable, Economical, Simple, Environment-friendly, Adaptable.

Good Cost Performance

As a product with patented technology, it makes a good firm bond to unsolidified cement, ruling out the possibility of fluid-channeling and forming into a firm, extraordinary waterproofing system called "skin Type", which is featured with high reliability and low cost.

Low requirements for substrates and short construction period

No matter wet or non-level substrates are available to apply. No need to primer, high flexibility of application, being not influenced by temperature, more remarkable advantages while in rain days, all above become the most power weapon to shorten the construction period.

Easy to overlap and seal

The materials not only has adhesive itself which can reach self-adhesive overlap firmly, but also can tightly bond to coatings like SPU that be brushed on its surface. These features solve the difficulty in pipe lining, winding up and joint, achieving seamless process of membranes.

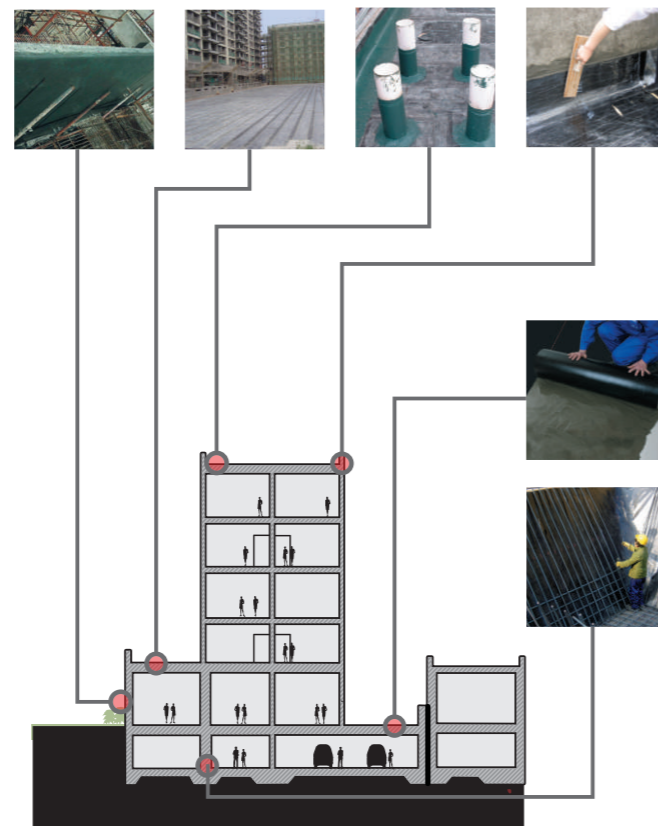
Adhesion Reliable & Convenient to Be Checked & Repaired

BAC wet-application membrane can make a good and lasting bond to the structure. If there is local failure on the membrane, water would be confined in a limited area without fluid-channeling. Even there is seepage, the seepage point would be at the breakage point, which makes it easy to repair the leakage.

Safe and Environment-friendly

During construction, there is no solvent or fuel involved, avoiding pollution and fire risks and saving resources as well.

Thanks to its creative efforts, Joaboa produces 2-meter-wide BAC wet-application waterproofing membrane with advanced manufacturing facilities, which reduces nearly half the number of joints and half the loss on lapping them. It makes building waterproofing more time-saving, material-saving and lower seepage probabilities. Besides, its cost performance is better and reliability of waterproofing system is more secured.



Bac Schematic Diagram of a building with application of BAC wet-application waterproofing membrane

Specifications

Thickness(mm)	Width(mm)	Length(mm)
3.0	1000/2000	10
4.0	1000/2000	10

Note: other specifications can be offered depended on agreements between buyers and supplier.

Scope of application

Waterproofing, anti-seepage and moisture proof of side walls of basements, baseboards, head plates and roofs.

Physical and Mechanical Properties

Performance Standard GB/T23457-2009

No.	Item	Index	
		PY	
		I	II
1	Content of soluble substance/(g/m)	3.0mm	2100
		4.0mm	2900
2	Tensile property	Tensile strength/(N/50mm) ≥	400
		Elongation at break /% ≥	30
3	Tearing strength /N ≥	180	300
4	Thermal stability	70°C, 2h no displacement. No flow ability. No drip page	
5	Low temperature flexibility /°C	-15	-25
		No crack	
6	Water impermeability	0.3 MPa, impermeability within 120 min	
7	Peel adhesion with membrane/(N/mm)	No treatment	1.0
		Heat treatment	1.0
8	Oil permeability/piece ≤	2	
9	Holding power/min ≥	15	
10	Peel adhesion with cement mortar/(N/mm) ≥	No treatment	2.0
		Heat treatment	1.5
11	Peel adhesion with cement mortar after immersion/(N/mm) ≥	1.5	
12	Thermal ageing(70°C, 168h) ≥	Tension retention/% ≥	90
		Elongation retention/% ≥	80
		Low temperature flexibility/°C	-13
		No crack	
13	Thermal stability	Appearance	No wrinkles, No slip, No flow ability
		Dimensional size/% ≤	2.0

Storage and Transportation

1. Different types or specifications of products should be separated, not mixed.
2. Keep it dry and ventilated, protected from the sun or rain.
3. Storage temperature should never be higher than 45 °C. Pile up the membranes flatwise whose stockpile height never exceeds five layers. One layer is guaranteed if it is placed vertically.
4. Prevent it from inclination or In the process of transportation, it should be lying in case of inclination or lateral pressure. If necessary, cover it with felt-cloth.
5. Storage time is at least one year from manufacture date on if the product is under normal operation of storage.

Manufacturing Bases



Shenzhen Materials Factory



Beijing Joaboa



Suzhou Joaboa



Hubei Joaboa



Wuhan Joaboa



Chengdu Joaboa



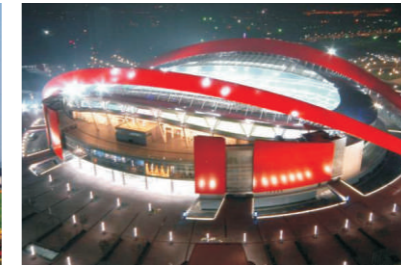
Joaboa Tech has invested USD 8,333,334 to set up an excellent self-adhesive membrane product line by introducing advanced facilities from American A&D company.

Joaboa Tech has formed industrial layout network the whole China first. With advanced facilities, strict QMS and excellent environmental facilities, Joaboa guarantees good quality of its products.

Typical Projects



Shenyang Olympic Sports Center



Nanjingolympic Sports Center



Shijiazhuang Airport



Huaxia House Furnishing



The First International



Guangzhouwanke City Garden



Nanjingjiuhuamountaintunnel



Shenzhen Bon-garden Landscape Park



Shenzhen Book City Center



Yinchuangovernmentcenter



China Agriculture University



Hainanprovince Office Building



Tanzania National Stadium



Dalianhepingmodern City



Suzhou International Expo Center